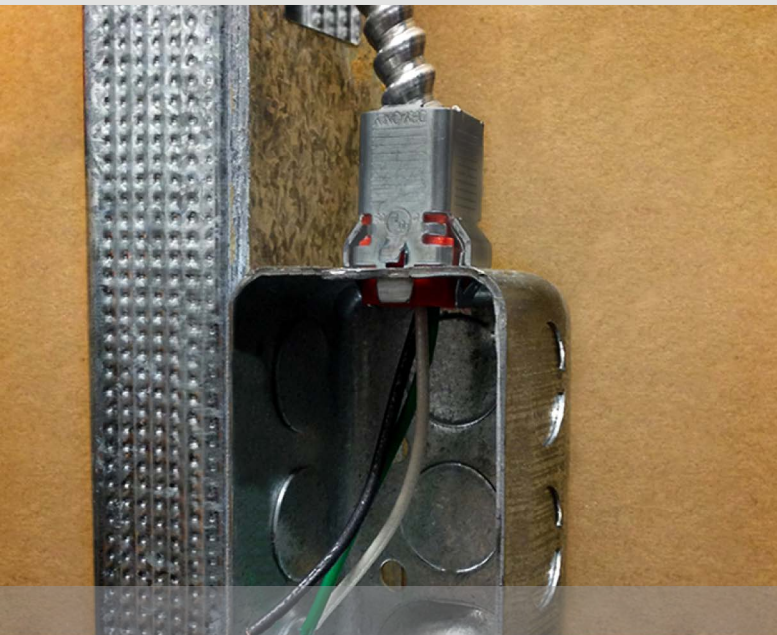


Double Snap Lock® Flex Fittings

AC/MC Connector

Sigma is proud to introduce a new line of cULus listed, Double Snap Lock® Flex products. These time-saving fittings use a patented technology that allows them to be installed without the use of any tools.

NEW PRODUCT



Labor and time saving fitting for the installation of AC/MC/FMC conduit into boxes or enclosures.

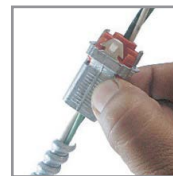
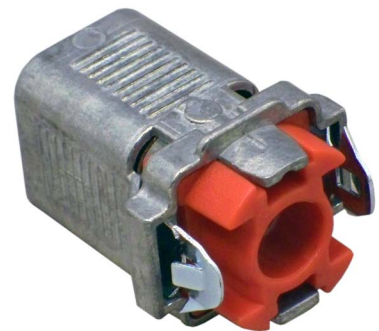
| Size | Part# | Retail Model# | Retail Case Qty |
|------|-----------|---------------|--------------------------------|
| 3/8" | BXC037DSI | 45505 | 12 bags of 2 |
| | | C-570 | Contractor Box (2 boxes of 25) |

FEATURES

- Fast installation, no tools required
- Robust, pre-assembled throat insulator
- Easy, tool-free removal, reusable
- Concrete-tight when taped
- Patented

MATERIALS

- Durable die-cast zinc construction with plastic insulator



Snap in cable



Snap into box



Tool free removal

TECHNICAL SPECS

3/8" Trade Size

- Fits 1/2" knockout
- AL and steel AC 14-2 to 10-2
- AL and steel MC/MCI-A/HCF 14-2 to 10-3
- AL and steel 3/8" FMC/RWFMC

